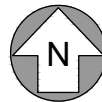


P:\Projects\Burke Property, Pray, MT\CAD\BURKE - site.dwg



1
FIG. D

GWIC WELL MAP
SCALE: 1" = 470'



GRAPHIC SCALE



1 inch = 470 ft.

ABSAROKA INVESTMENTS PROPERTY

S25, T05 S, R08 E, PARCEL DESCRIBED ON PLAT 196
PARK COUNTY, MT

GWIC WELL MAP



CIVIL and STRUCTURAL
ENGINEERING
PROJECT MANAGEMENT

BRIDGER ENGINEERS, INC.

2150 ANALYSIS DRIVE, STE. B
BOZEMAN, MONTANA 59716

Ph# (406) 585-0590
Fax# (406) 582-1057

DATE:
04.29.2021

Sheet No.

REVISION SCHEDULE

NUMBER	DATE

FIG. C